



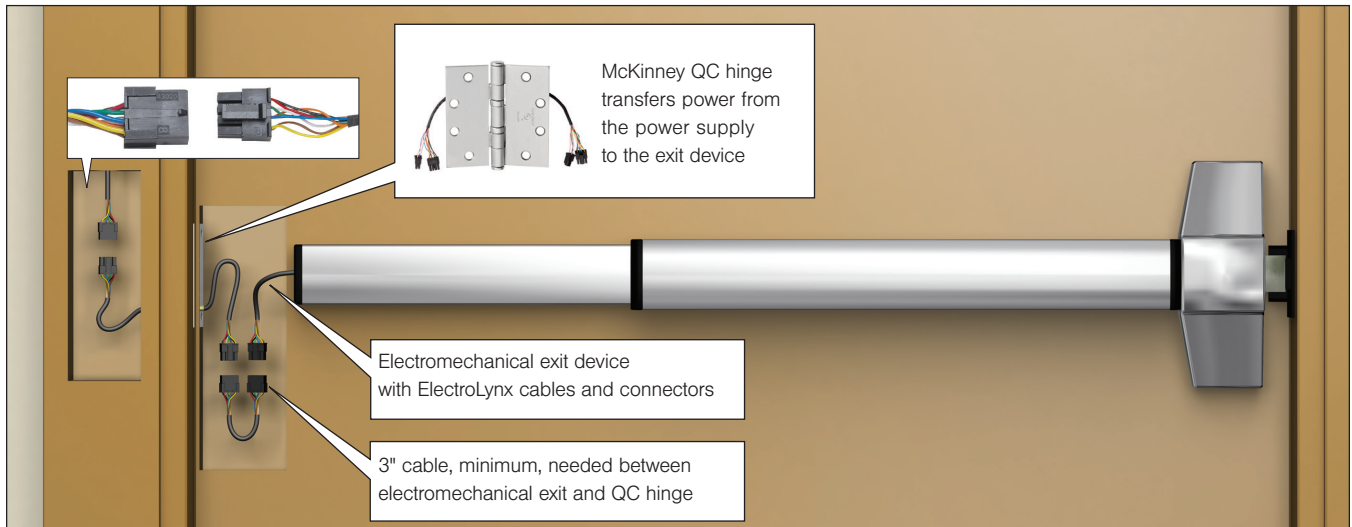
# Transfer Device Solutions



**McKinney**<sup>®</sup>

**ASSA ABLOY**

Experience a safer  
and more open world



## Contents

About ElectroLynx .....	3
Transfer Device Decision Tree .....	4
Hinge Wiring Requirement	
Corbin Russwin.....	7
Yale® .....	7
SARGENT .....	7
ElectroLynx Cables .....	4, 8, 9
McKinley Hinges, Concealed Circuit	
Quick Connect (QC) Hinges .....	5
MacPro Electrified Hinges .....	6
Power over Ethernet (PoE) Hinges.....	8-9
Pemko Aluminum Continuous .....	10
Markar Stainless & Steel Continuous.....	11-12
Door Cord and EPT .....	13
Service Kit and Tools .....	14
Standard Pinout Colors.....	15

## How ElectroLynx Helps

To answer the demand for “smart” electronic access control and locking solutions that require fast, easy, and cost-effective installation, ASSA ABLOY Group brands use the ElectroLynx standardized plug-in connectors and color-coded wiring system. With ElectroLynx, doorway components come pre-wired for easy hookup to the power source. Key to the system is the transfer device hinge that carries power from the frame to the locking hardware.

### OVERVIEW:

- Makes it easy to bring power to the locking hardware
- Wires have connectors that snap together
- Developed by ASSA ABLOY and is now the industry standard

### KEY BENEFITS OF ELECTROLYNX INCLUDE:

- Fast, fool-proof, and future-proof installations
- Easy upgrades and retrofitting while maintaining fire rating
- Snap-together Molex® connectors ensure proper connections
- No need to match up wires, create connections or drill holes in the door or frame
- Concealed wiring preserves aesthetics of the opening

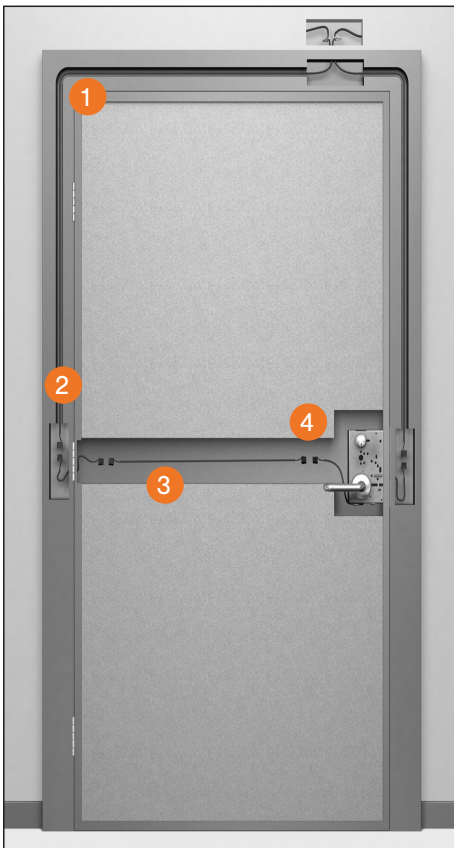
## Plug-and-Play

McKinney hinges can have ElectroLynx connectors to transfer power from the incoming source through to the electrified hardware. The only hardwiring is from the building's wiring system to the opening.

All ElectroLynx retrofit cables are 12 conductor, supplied with an 8-pin connector and a 4-pin connector. If you are utilizing only 8-pin conductors or less, you can cut off the excess 4-pin conductor connectors.

- Pre-wired doors from Ceco Door, Curries, and ASSA ABLOY Wood Doors have special harnesses built in to house the wiring components.
- ElectroLynx is offered on the electrified hardware products from Adams Rite, Corbin Russwin, HES, Norton Rixson, SARGENT, Securitron and Yale®

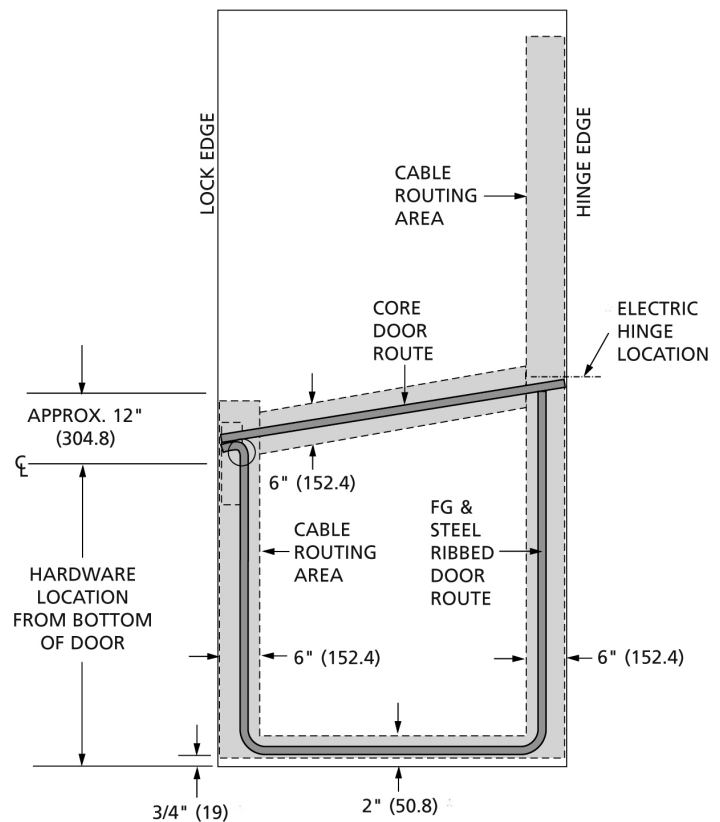
- 1 15'2" or longer ElectroLynx cable from hinge location to ceiling
- 2 Electric hinge bridges the power from the frame to the door
- 3 In-the-door wiring harness brings power to the locking hardware or exit device
- 4 Locking hardware or exit device comes pre-wired with connectors



## Pre-wired Doors

The ElectroLynx system inside a door and frame includes a one-piece pre-fabricated wiring harness equipped with Molex connectors. The wiring harness consists of 8-pin and 4-pin ElectroLynx connectors with 22 gauge wire. It is an efficient labor-saving alternative to using conduit inside a door, which requires installation of wires at the job site.

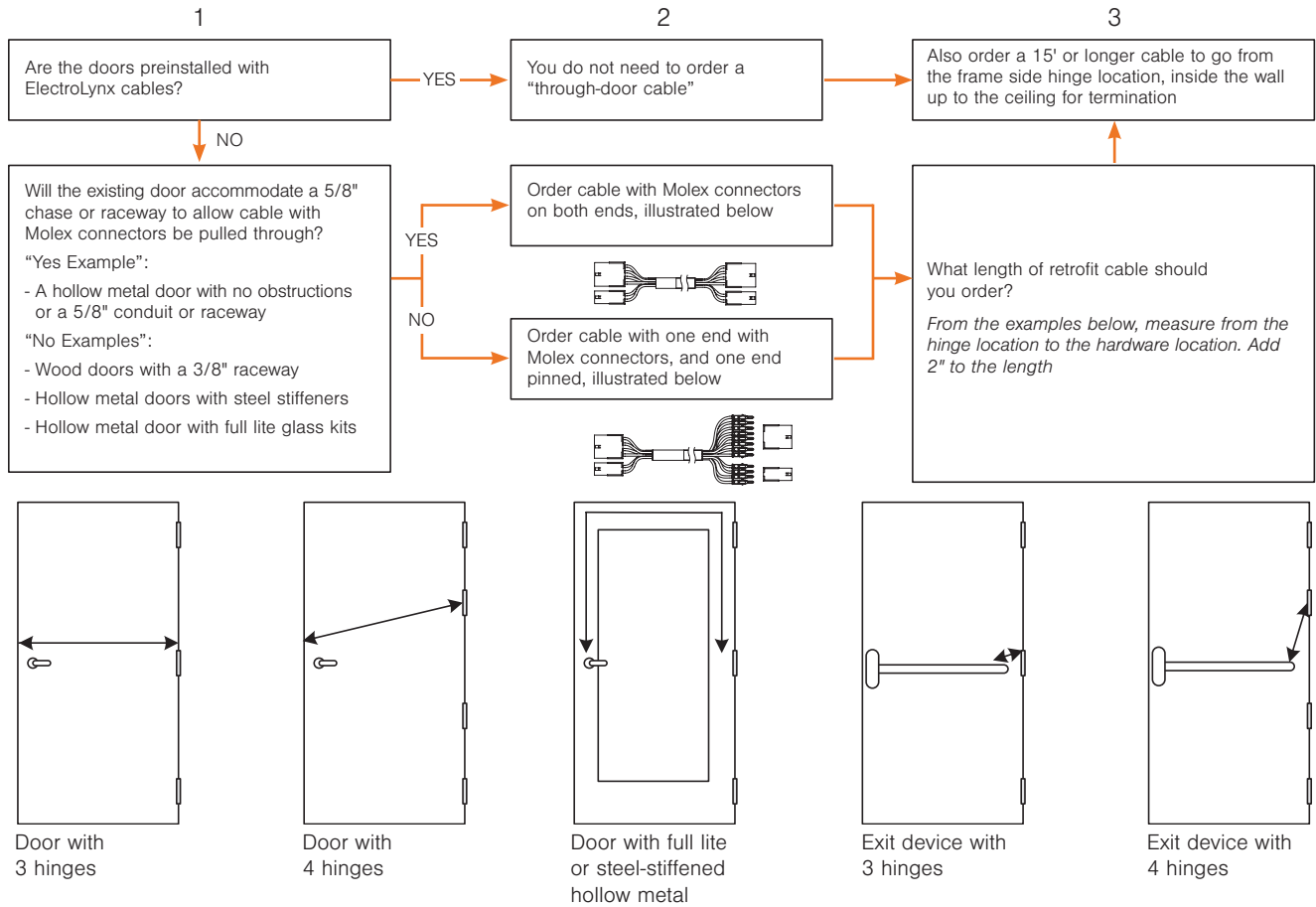
In addition to standard doors, fire rated doors from Ceco Door, Curries and ASSA ABLOY Wood Doors are also available with ElectroLynx cabling.



800-346-7707 | [www.mckinneyhinge.com](http://www.mckinneyhinge.com)  
Check the web site for the up-to-date catalog

McKinney is a brand associated with Corbin Russwin, Inc., an ASSA ABLOY Group company. Copyright © 2009-2022, Corbin Russwin, Inc. All rights reserved. Reproduction in whole or in part without the express written permission of Corbin Russwin, Inc. is prohibited.

If you are not ordering ASSA ABLOY doors with the ElectroLynx cable pre-installed in the door, you must order an ElectroLynx retrofit cable to go between ANY hardware and the hinge. This includes 3" cables to go from the hinge to an exit device and up to a 15' cable to go up and around a full lite metal door. To ensure you order the correct ElectroLynx connecting cables, follow these steps:



## Standard ElectroLynx Retrofit Cable Sizes

Actual Cable Length	12 Conductor and Molex both ends	12 Conductor and Molex one end, pinned one end	Typical Application
3"	QC-C003	QC-C003P	Between hinge and the end of an exit device.
6"	QC-C006	QC-C006P	
12"	QC-C012	QC-C012P	
26"	QC-C200	QC-C200P	Between hinge and through the door to the lockset or exit device trim.
32"	QC-C206	QC-C206P	
38"	QC-C300	QC-C300P	
44"	QC-C306	QC-C306P	
50"	QC-C400	QC-C400P	From the hinge location, up the jamb to above the ceiling, or up and around full lite or half lite metal door.
15' 2"	QC-C1500	QC-C1500P	
25'	—	QC-C2500P	
30'	—	QC-C3000P	

Custom cable lengths are also available. Call 1-800-346-7707 for information.

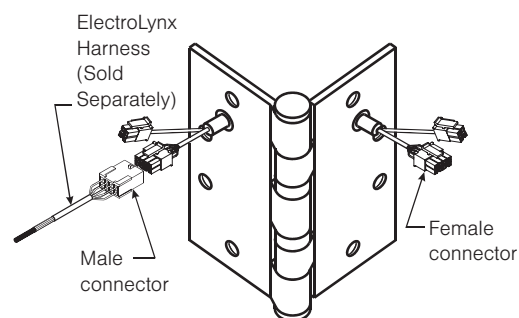
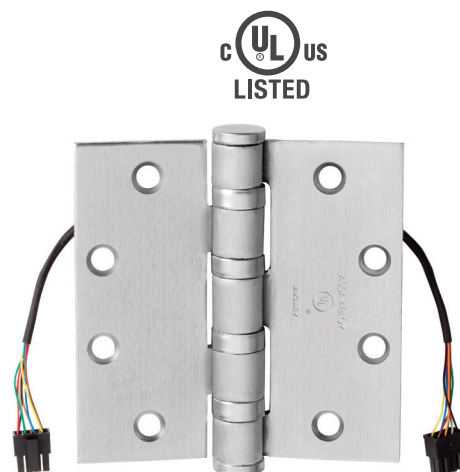
800-346-7707 | [www.mckinneyhinge.com](http://www.mckinneyhinge.com)  
Check the web site for the up-to-date catalog

## McKinney QC Concealed Circuit Electric Hinges

The McKinney ElectroLynx hinge is an intermediate connector that passes a constant flow of current between the source of power (jamb) and the actuated devices in the door (electric locks, exit devices, etc.) regardless of door position. Each hinge features concealed plug connectors that eliminate the need for separate or exposed wiring. Brass eyelets add protection and durability to the ElectroLynx hinge and common wire colors and standard connectors make installation quick and simple. Electric hinges should be installed in the center position on the door. Once installed, it will give no outward indication of its function and will transmit power efficiently and reliably, as long as the wire capacity is not exceeded.

All ElectroLynx hinges are factory tested and specially packaged to minimize against damage during shipment. Installation instructions are packed with each hinge.

- For 4 amp continuous @ 24 volts AC or DC per circuit, 28 gauge multi-strand wires are used.
- An 8 position connector is used for QC4 and QC8 wire hinges. An 8 position and a 4 position connector is used for QC12 wire hinges. A QC2A wire hinge is available for power on, power off applications
- Wires are coordinated to work with ASSA ABLOY Group brands electromechanical hardware
- Materials: brass, stainless steel, and steel
- Finishes: full mortise QC hinges are available in most BHMA and McKinney powder coat finishes
- Hand of hinge must be specified on two knuckle hinges
- Can be used in conjunction with MM option on most full mortise hinges. QC12 x MM not recommended for wood or solid core doors



Back of 12 wire hinge shown

### HOW TO ORDER STRING

4½X4½ TA2714 26D QC12

A wide selection of hinges can be electrically modified including:

3- Knuckle	5- Knuckle
TA314	TA2314
TA714	TA2714
TA386	T4A3386
TA786	T4A3786
MK100	TA2895
	T4A3395
	T4A3795

#### Options:

Code	Description
<b>QC2A</b>	1 circuit
<b>QC4</b>	2 circuits
<b>QC8</b>	4 circuits
<b>QC12</b>	6 circuits

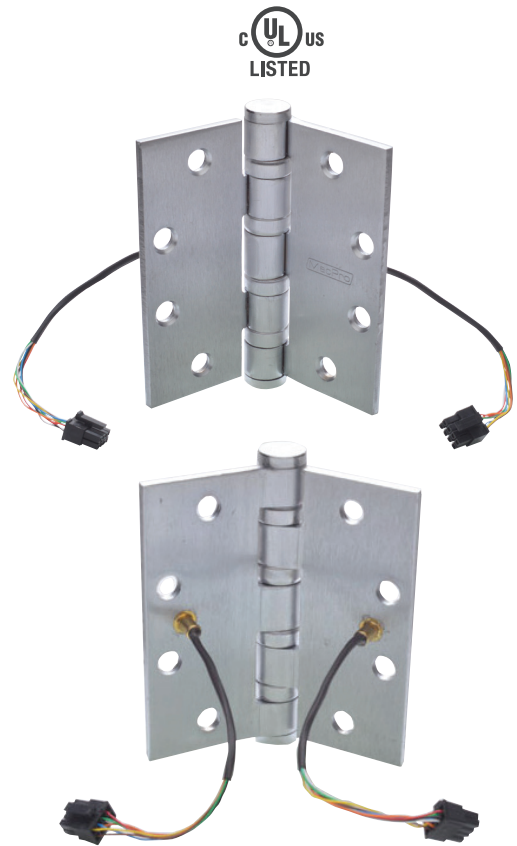


Most hinges including this Swing Clear Hinge can be electrically modified. Call 1-800-346-7707 for more information.

## MacPro® Electric Hinges

**MacPro Electric Hinges are ideal for retrofit and after market applications. They feature center exit wires allowing them to replace existing electric hinges with center exit wires.**

- MacPro Electric Hinges are easy to install with ElectroLynx Quick Connect (QC) or Concealed Circuit (CC) connection options
- Once installed, the wires are concealed to increase security and prevent tampering
- Available in standard and heavy weight
- Brass eyelets on the portal holes prevent chafing, giving the hinge an extended service life
- UL Listed
- Concealed Circuit (CC) is available as CC4 or CC8
- ElectroLynx Quick Connect (QC) is available with QC4, QC8 or QC12



No.	Size	Hinge Type	Base Material	Gauge	Weight	Finish	Connector Options
MPB79	4 1/2" x 4"	Bearing	Steel	.134	STD	26D	CC4, CC8
MPB79	4 1/2" x 4"	Bearing	Steel	.134	STD	26D	QC4, QC8, QC12
MPB79	4 1/2" x 4 1/2"	Bearing	Steel	.134	STD	26D	CC4, CC8
MPB79	4 1/2" x 4 1/2"	Bearing	Steel	.134	STD	26D	QC4, QC8, QC12
MPB79	4 1/2" x 4 1/2"	Bearing	Steel	.134	STD	26D	CC4-18
MPB68	4 1/2" x 4 1/2"	Bearing	Steel	.180	HVY	26D	CC4, CC8
MPB68	4 1/2" x 4 1/2"	Bearing	Steel	.180	HVY	26D	QC4, QC8, QC12
MPB79	4 1/2" x 4 1/2"	Bearing	Steel	.134	STD	BSP	CC8, QC12
MPB91	4 1/2" x 4"	Bearing	Steel	.134	STD	32D	CC8, QC8, QC12
MPB91	4 1/2" x 4 1/2"	Bearing	Steel	.134	STD	32D	CC8, QC12
MPB99	4 1/2" x 4"	Bearing	Steel	.180	HVY	32D	CC8, QC12
MPB99	4 1/2" x 4 1/2"	Bearing	Steel	.180	HVY	32D	CC8, QC12
MPB99	5" x 4 1/2"	Bearing	Steel	.180	HVY	32D	CC8, QC12
MPB68	5" x 4 1/2"	Bearing	Steel	.180	HVY	26D	CC8, QC12

800-346-7707 | [www.mckinneyhinge.com](http://www.mckinneyhinge.com)  
Check the web site for the up-to-date catalog

## Hinge Wiring Requirements

SARGENT	Hinge
Access Control Products - All Device Types	
Harmony Series	QC12
Profile Series v.G1.5 (Hard Powered)	QC8
IN120 (hard powered)	QC8
IN220	PoE
Passport 1000 P1	PoE
Passport 1000 P2 (hard powered)	QC8
Passport 1000 PG (hard powered)	QC8
Profile Series v.S1	PoE
Profile Series v.S2 (hard powered)	QC8
Cylindrical Locksets 10 Line / 8 Line (discontinued)	
All Functions / Options	QC8
Mortise Locksets 8200 Series	
All Functions / Options (Exception LX, DX)	QC8
LX (Latchbolt Monitor)	QC12
DX (Deadbolt Monitor)	QC12
Electrified Exit Devices 80 Series	
All Functions / Options (Exception 56-, TL-, 59-, AL-)	QC8
56- (Electronic Latch Retraction) Timer Function Only	QC12
TL- (Electro-Luminescent)	QC12
59- (Electroguard Delayed Egress) Remote Alarm, Latchbolt Mon.	QC12
AL- (Alarmed Exit with 546 Harness - Hardwired Option)	QC12
Electrified Exit Trim 700 Series	
All functions / Options	QC8
Electrified Exit Devices AND Electrified Trim Combination	
All Options with All Trim (Exception 56-, TL-, 59-, AL-, 54-)	QC12
56- (Electronic Latch Retraction) Timer Function Unavailable	QC12
TL- (Electro-Luminescent) Unavailable	QC12
59- (Electroguard Delayed Egress) Remote Alarm, Latchbolt Unavailable	QC12
AL- (Alarmed Exit) Remote Reset and Door Position inputs Unavailable	QC12
54- (Trim Monitor Switch) Normally Closed Switch option Unavailable	QC12

YALE	Hinge
Access Control Products - All Device Types	
Symphony® Series	QC12
Cylindrical Locksets 5400LN/4700LN/5300LN Series	
All Functions / Options	QC8
e4760LN/e4761LN inTouch® Hardwire (discontinued)	QC8
nexTouch™ NTB600, NTM600 and NTT600 with WH-28 optional wire harness	QC8
Mortise Locksets 8800 Series	
All Functions / Options (Exception REX and ITS)	QC8
REX alone	QC12
REX in combination with any other (i.e. LBM or DBM)	QC12
ITS	QC12
LBM or DBM (single monitor only)	QC8
LBM and DBM	QC8
Electrified Exit Devices 6000 and 7000 Series	
All Functions / Options (Exception O, A)	QC8
O (Trim Monitor) Alone or in combination with any other option	QC12
A (Alarmed Exit with HW Hardwired Option)	QC12
Electrified Exit Trim 600 Series	
All functions / Options	QC8
CORBIN RUSSWIN	
Access Control Products - All Device Types	
Access 600 Series RNE1	QC12
Access 800 Series AC2 (Hard Powered)	QC8
IN120 (hard powered)	QC8
IN220	PoE
Access 700 PIP1	PoE
Access 700 PWI1 (hard powered)	QC8
Access 800 IP1	PoE
Access 800 WI1 (hard powered)	QC8
Cylindrical Locksets CL3300 Series	
All Functions	QC8
Mortise Locksets ML20900 Series	
All Functions / Options	QC8
Electrified Exit Devices ED5000 / ED4000	
All Functions / Options (Exception M93, M61)	QC8
M93 (Latch Bolt Monitor) Alone or in combination with any other option	QC12
M61 (Alarmed Exit with M35 Hardwired Option)	QC12
Electrified Exit Trim 9900 Series	
All functions / Options	QC8

800-346-7707 | [www.mckinneyhinge.com](http://www.mckinneyhinge.com)

Check the web site for the up-to-date catalog

McKinney is a brand associated with Corbin Russwin, Inc., an ASSA ABLOY Group company. Copyright © 2009-2022, Corbin Russwin, Inc. All rights reserved. Reproduction in whole or in part without the express written permission of Corbin Russwin, Inc. is prohibited.

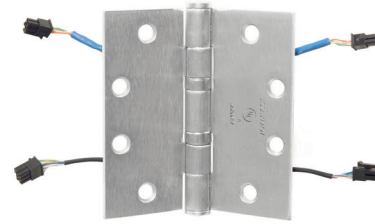
## McKinney ElectroLynx Power over Ethernet (PoE) Hinge

The McKinney ElectroLynx PoE provides for the passing of Ethernet data through the door opening. Installation is a snap with the friendly "plug and play" connectors which allow power to be linked from the incoming source through the door to the electrified hardware. PoE data is bidirectional.

Brass eyelets add protection and durability to the PoE hinge which features common wire colors coordinated to work with intelligent Power over Ethernet electromechanical hardware from SARGENT and Corbin Russwin.

The PoE hinge should be installed in the second from bottom hinge position on the door. Once installed, it will give no outward indication of its function and will transfer power and data efficiently and reliably, as long as the wire capacity is not exceeded.

All PoE hinges are factory tested and specially packaged to minimize damage during shipment. Installation instructions are packed with each hinge. Along with the PoE hinge, mating PoE door and frame side harnesses are required, to complete the opening. The required PoE harnesses must be ordered separately (see below for detail).

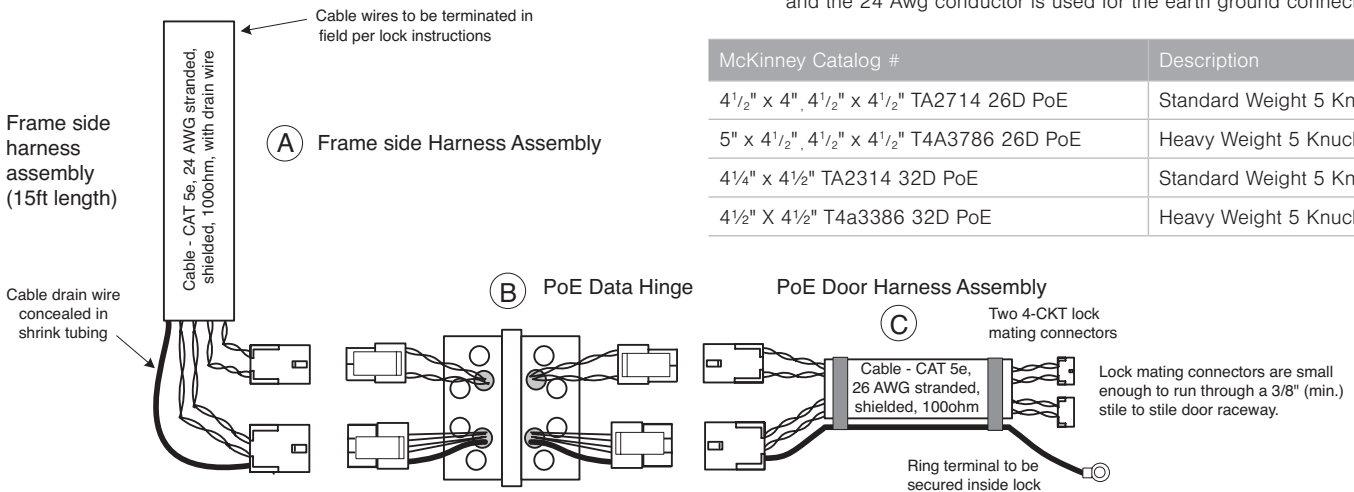


U.S. Patent No. 7,824,200

Each hinge features two 6-position and two 4-position Molex connectors, 9 multistrand wires; 2 twisted pairs (26 AWG), 4 straight conductors (28 gauge) and 1 straight conductor (24 AWG) with concealed plug connectors that eliminate the need for separate or exposed wiring. Rated 350 mA continuous @ 48 volts DC nominal, the hinge is capable of two PoE wiring configurations:

1. Power over Data (5 wire); Power and Data supplied together over the 2 twisted (26 AWG) pairs and the 24 AWG conductor is used for the earth ground connection.
2. Data with Power over spares (9 wire); Data over 2 twisted (26 AWG) pairs with Power over spare pairs (4 straight 28 AWG conductors) and the 24 Awg conductor is used for the earth ground connection.

McKinney Catalog #	Description
4 1/2" x 4", 4 1/2" x 4 1/2" TA2714 26D PoE	Standard Weight 5 Knuckle
5" x 4 1/2", 4 1/2" x 4 1/2" T4A3786 26D PoE	Heavy Weight 5 Knuckle
4 1/4" x 4 1/2" TA2314 32D PoE	Standard Weight 5 Knuckle
4 1/2" X 4 1/2" T4a3386 32D PoE	Heavy Weight 5 Knuckle



**NOTES:**

The PoE door & frame harnesses can accommodate a variety of new (with raceway) and retrofit applications. Connectors are small enough to run through a 3/8" (min.) stile-to-stile door raceway. Connects to intelligent Power over Ethernet electromechanical hardware from SARGENT and Corbin Russwin.

## Standard ElectroLynx Power over Ethernet (PoE) Harnesses

For use with the Corbin Russwin Access 800 IP1 and SARGENT Profile Series v.S1

Harness Length	McKinney Catalog #	Door Side Application
30"	PoE-C206P	20" to 25" door width (doors with 3 butt hinges with PoE hinge in center to stile to stile raceway to lock prep)
36"	PoE-C300P	26" to 31" door width (doors with 3 butt hinges with PoE hinge in center to stile to stile raceway to lock prep)
42"	PoE-C306P	32" to 36" door width (doors with 3 butt hinges with PoE hinge in center to stile to stile raceway to lock prep)
48"	PoE-C400P	37" to 42" door width (doors with 3 butt hinges with PoE hinge in center to stile to stile raceway to lock prep)
54"	PoE-C406P	43" to 48" door width (doors with 3 butt hinges with PoE hinge in center to stile to stile raceway to lock prep)
60"	PoE-C500P	Door Harness Assembly
84"	PoE-C700P	Door Harness Assembly
156"	PoE-C1300P	Door Harness Assembly
EPT Harness		
360"	PoE-CEPT30	EPT Harness Assembly
Frame Side Application		
180"	PoE-C1500P	From the hinge location, up the jamb to wall/ceiling

Custom Lengths Available

800-346-7707 | [www.mckinneyhinge.com](http://www.mckinneyhinge.com)  
Check the web site for the up-to-date catalog



## ElectroLynx Power over Ethernet (PoE) Harnesses with RJ-45 Connectors

Connecting ASSA ABLOY Group brands Corbin Russwin and SARGENT next generation Power over Ethernet (PoE) enabled hardware is quick and easy with McKinney ElectroLynx harnesses. Molex connectors connect the hinge to the harness, and a standard RJ-45 connector connects the harness to the electrified door hardware.

The following hardware uses the RJ-45 connectors:

- Corbin Russwin IN220
- Corbin Russwin Access 700 PIP1
- SARGENT IN220
- SARGENT Passport 1000 P1

Harnesses are available with the RJ-45 connector attached or loose in the package. The harnesses range in length from 30" up to 156" with custom lengths available (consult factory).



PoE Door Harness with RJ-45 Connector

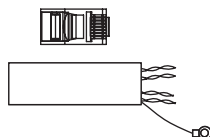
### ElectroLynx PoE Harnesses with RJ-45 Connectors



Actual Cable Length	Molex one end, RJ-45 attached one end	Molex one end, RJ-45 Loose	Door Side Application
30"	PoE-C206PRJ	PoE-C206RJ	20" to 25" door width (doors with 3 butt hinges with PoE hinge in center to stile to stile raceway to lock prep).
36"	PoE-C300PRJ	PoE-C300RJ	26" to 31" door width (doors with 3 butt hinges with PoE hinge in center to stile to stile raceway to lock prep).
42"	PoE-C306PRJ	PoE-C306RJ	32" to 36" door width (doors with 3 butt hinges with PoE hinge in center to stile to stile raceway to lock prep).
48"	PoE-C400PRJ	PoE-C400RJ	37" to 42" door width (doors with 3 butt hinges with PoE hinge in center to stile to stile raceway to lock prep).
54"	PoE-C406PRJ	PoE-C406RJ	43" to 48" door width (doors with 3 butt hinges with PoE hinge in center to stile to stile raceway to lock prep).
60"	PoE-C500PRJ	PoE-C500RJ	Door Harness Assembly
84"	PoE-C700PRJ	PoE-C700RJ	Door Harness Assembly
156"	PoE-C1300PRJ	PoE-C1300RJ	Door Harness Assembly

## EPT Harness Assembly

30 ft cable with loose RJ-45 connector



Actual Cable Length	RJ-45 Loose	EPT Harness Assembly
360"	PoE-CEPT30RJ	EPT Harness Assembly

800-346-7707 | [www.mckinneyhinge.com](http://www.mckinneyhinge.com)

Check the web site for the up-to-date catalog

McKinney is a brand associated with Corbin Russwin, Inc., an ASSA ABLOY Group company. Copyright © 2009-2022, Corbin Russwin, Inc. All rights reserved. Reproduction in whole or in part without the express written permission of Corbin Russwin, Inc. is prohibited.

## Aluminum Continuous Geared Electric Hinge (SER and ACC Option)

The Pemko electrified continuous hinge is furnished polyurethane coated 4, 8, or 12 TRI-FLEX titanium copper alloy cables with Molex connectors at each leaf.

Two options allow variable degrees of service to be performed at the specific location of current carrying cables via either a removable 8" or a pivoting 8" section of the hinge. Both of these options, SER, and ACC are available as 4, 8 or 12 wire configurations.

- Performance tested 3,000,000 cycles with the TRI-FLEX titanium copper alloy cables
- Each cable carries 6 amps continuous @ 24 volts with a 16 amp in-rush for 820 milliseconds
- TRI-FLEX cable conductor is warranted for 5 years on HD1 hinges and 1 year on standard duty and HD3 hinges
- Hinges are handed
- Available on edge hung aluminum continuous hinges
- Each electrical prep is supplied with a 48" (door) and 180" (frame) wire harness
- Standardized prep locations on 83", 85", 95" and 120" hinges

### OPTIONS

#### Serviceable/Removable (SER)

The hinge is furnished to be installed in three sections, allowing the current carrying cables to be serviced or replaced without removing the door from the frame. Additionally the SER option allows the current carrying cables to be safely stored or delivered to the electrician or security contractor prior to the installation of the electrified hardware, eliminating the necessity of the electrician or security contractor being present when the doors are being hung.

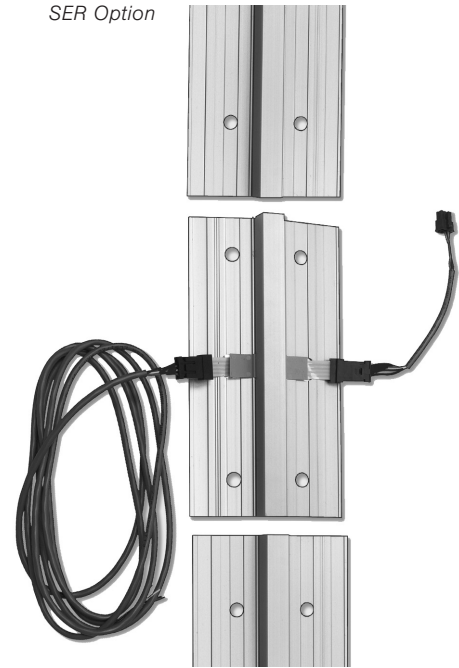
#### Accessible (ACC)

The hinges are furnished to be installed in a single section with each leaf modified to pivot at the location of the current carrying cables and allow access to the cables and connected wiring. Electrical modification is in the center of the hinge.

**Concealed Magnetic Monitoring (CM)** is also available with the SER and ACC options.



SER Option

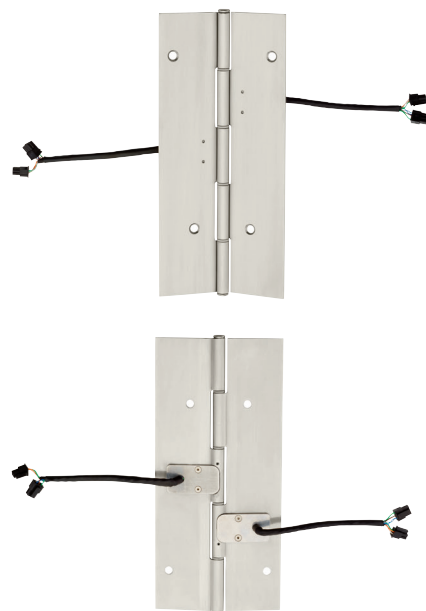


## Markar Power over Ethernet (PoE) Continuous Hinge

The Markar Power over Ethernet (PoE) Continuous Hinge provides a means to pass Ethernet data and power through the hinge to the electrified PoE hardware. Available as an option on most 3500 and 300 Series Edge Mount Continuous Pin and Barrel Hinges. Continuous pin and barrel hinges distribute the door weight evenly throughout the hinge length, thus reducing wear and tear on the door and frame. They can also increase security by preventing the insertion of devices between the door and frame.

ElectroLynx "plug and play" functionality quickly connects to other ASSA ABLOY Group brand products, including access control hardware from Corbin Russwin and SARGENT and McKinney cables and harness assemblies. The Electrical Transfer Access Prep (ETAP) is included, allowing easier access to wiring and making installation even faster.

Features	Benefits
"Plug and play" ElectroLynx (9 wire) connectors	Quick and easy installation
Electrical Transfer Access Prep (ETAP)	Easy, one-person access to wiring while the hinge is hung on door and frame
Concealed wires	Eliminates disruption of power due to tampering with exposed wires
EL clips on wire portal holes	Conceals and protects wiring from chafing
UL Listed, ANSI/BHMA A156.26 Grade 1	Meets industry standards



10" Hinge Section Shown



## Markar Stainless Steel Pin & Barrel Continuous Electrified Hinges

The Markar Electrified Hinge option is available on FM300, FM3500 and FM200 edge mount hinges.

- 14 Gauge, type 304 stainless steel (FM300 & FM3500) and zinc plated 1012 carbon steel (FM200), features .188 diameter stainless pin
- Symmetrically templated hole pattern
- FM300 & FM200 supports weight up to 600 lbs.; FM3500 supports up to 900 lbs. (maximum 4'0" door width)
- Hinges are handed
- EL option has ElectroLynx Connectors for quick connection.
- Optional ETAP electrical transfer prep available
- Available in 4, 8 or 12 wire configurations

EL Concealed Current Transfer (see template M91-018-0002 for standard prep locations)

For FM300, FM3500, FM200

EL-4 Qty (4) two wires at 22 gauge and two wires at 26 gauge

EL-8 Qty (8) two wires at 22 gauge and six wires at 26 gauge

EL-12 Qty (12) two wires at 22 gauge and ten wires at 26 gauge



FM300 with  
EL-12 option



## Door Cord and Electrical Transfer (EPT)



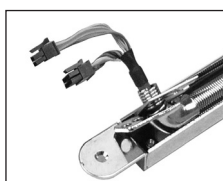
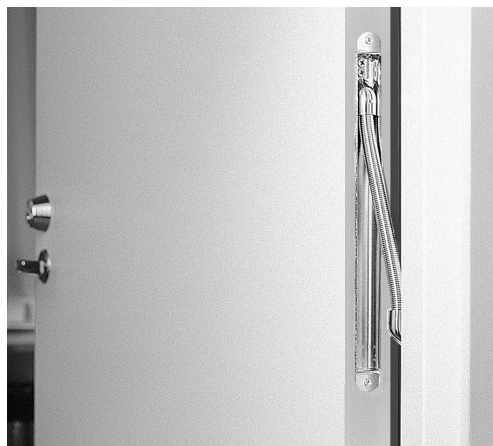
### MCKINNEY ELECTRICAL POWER TRANSFER

- Installs in the door and frame edges
- Accepts a thick cable and protects it within a flexible steel shield
- Device that will work on most doors hung using butt hinges, continuous hinges or pivots
- Will not function on a center pivot door

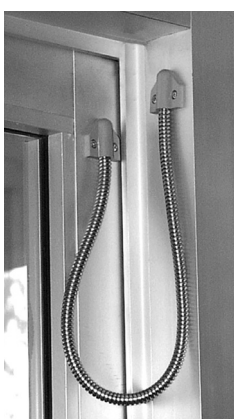
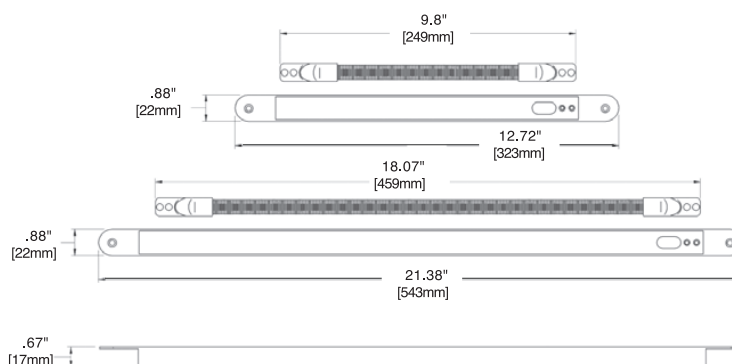


### HOW TO ORDER

Part Number	Description
McK-EPT	Electrical power transfer
McK-EPTL	Electrical power transfer, long
McK-EL-EPT	ElectroLynx EPT -12 wire
McK-EL-EPTL	ElectroLynx EPTL -12 wire



EPT can be ordered with ElectroLynx by specifying McK-EL-EPT or McK-EL-EPTL.



### MCKINNEY DOOR CORD

- Simplest and most economical solution for power transfer
- Consists of an 18" or 36" armored stainless steel cable and plastic end pieces in light gray and black
- Cable has an interior diameter of .25"
- Supports interior wire cables up to .2"

### HOW TO ORDER

Part Number	Description
McK-TSB-C	Door cord with gray/black caps 18" cord
McK-TSB-CXL	Door cord with gray/black caps 36" cord

800-346-7707 | [www.mckinneyhinge.com](http://www.mckinneyhinge.com)  
Check the web site for the up-to-date catalog

McKinney is a brand associated with Corbin Russwin, Inc., an ASSA ABLOY Group company. Copyright © 2009-2022, Corbin Russwin, Inc. All rights reserved. Reproduction in whole or in part without the express written permission of Corbin Russwin, Inc. is prohibited.

## Service Kit and Tools

### QC-R001 SERVICE KIT

The service kit includes a quantity of every different type of connector and terminal required for repairing product connections/ terminations or pinning wires on certain retrofit harnesses. Contains 10 each 2, 4, 8 molex receptacles and plugs as well as corresponding terminals, extraction tool and pinning assembly guide.

## Receptacles and Terminals

Miscellaneous Parts	Part Number	Description
1 bag (100 pc)	QC-RF2	Female receptacle (2ckt)
1 bag (100 pc)	QC-RF4	Female receptacle (4ckt)
1 bag (100 pc)	QC-RF8	Female receptacle (8ckt)
1 bag (100 pc)	QC-RM2	Male plug (2ckt)
1 bag (100 pc)	QC-RM4	Male plug (4ckt)
1 bag (100 pc)	QC-RM8	Male plug (8ckt)
1 bag (100 pc)	QC-FT2024	Female terminal (AWG 20-24)
1 bag (100 pc)	QC-FT2630	Female terminal (AWG 26-30)
1 bag (100 pc)	QC-MT2024	Male terminal (AWG 20-24)
1 bag (100 pc)	QC-MT2630	Male terminal (AWG 26-30)
1 bag (100 pc)	POE-MT2024	Male Terminal (AWG 20-24)
1 bag (100 pc)	POE-RM6	Male Plug
1 bag (100 pc)	POE-RF6	Female Plug
1 bag (100 pc)	POE-MT2630	Male Terminal
1 bag (100 pc)	POE-FT2630	Female Terminal
1 bag (10 pc)	QC-DCC	Pinning assembly guide

### QC-R003 MOLEX HAND CRIMP TOOL

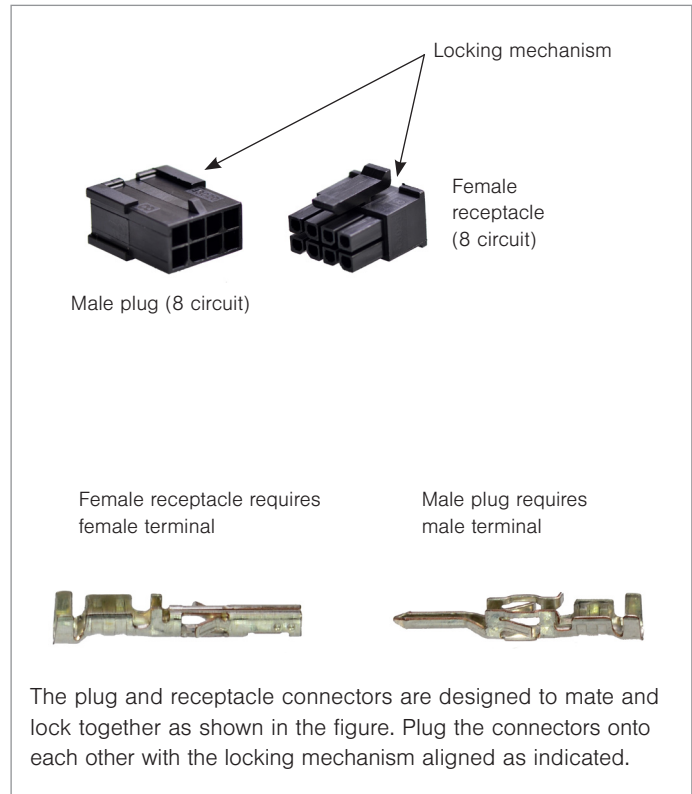
The crimp tool is required for adding Molex terminals (connector pins) to wires used with ElectroLynx products.

The tool is intended for low volume, or repair requirements only.



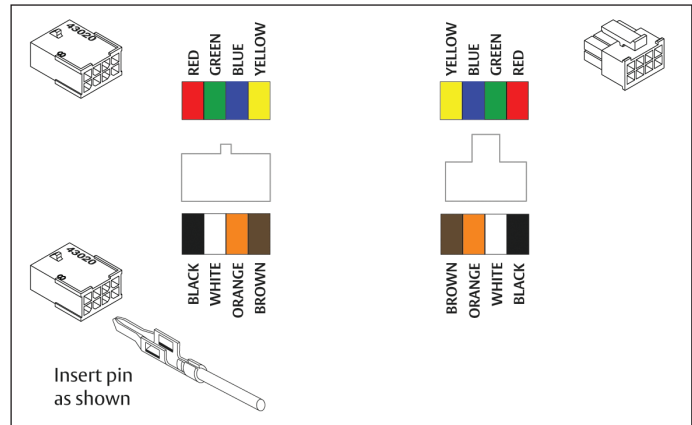
### QC-R002 EXTRACTION TOOL

The extraction tool is a simple hand tool used to remove damaged terminals from an ElectroLynx female receptacle or male plug.



### QC-DCC PINNING ASSEMBLY GUIDE

Included with every pinned conductor to aid in wire assembly.



### MG-16 JUNCTION BOX FOR ELECTRIC HINGES

- Knock-out holes on both ends for wires to pass through
- Removable cover plate from end brackets
- Guard supplied assembled for use with electric hinges
- Fits hinge reinforcements for 4½" or 5" contract grade hinges
- 20 gauge galvanized sheet steel, furnished in 2C finish

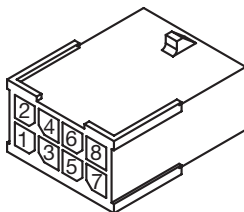
Recommended for use with our Concealed Circuit Hinges to protect wires. Unit to be installed in middle hinge location.



## ASSA ABLOY Standard Pinout Colors

### 2 THRU 8 WIRE

Connection Pin	Color Wire
1	Black
2	Red
3	White
4	Green
5	Orange
6	Blue
7	Brown
8	Yellow



NOTE: Door and frame should be prepared per the proper hinge template before installing the hinge.

#### Wire Specifications:

28 Gauge, stranded w/PTFE insulation, NEMA HP-3. Each conductor is colored differently for ease of identification.

#### Electrical Rating:

4 amp continuous @ 24 volts AC or DC, 16 amp pulse for 300 msec. (cycle time not less than 5 sec.), 10 amp pulse for 250 msec. (cycle time not less than 5 sec.)

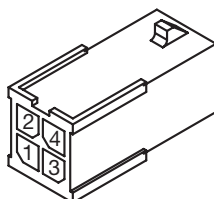
#### Location:

The QC Hinge should be located in the second from the bottom hinge preparation on the door and frame.

NOTE: Hinges with up to 8 wires will have an 8 position connector on them. If there are more than 8 and up to 12 wires there will be a 4 position connector in addition to the 8 position connector.

### 10 THRU 12 WIRE

Connection Pin	Color Wire
1- #9	Violet
2- #10	Gray
3- #11	Pink
4- #12	Tan



The ASSA ABLOY Group is the global leader in access solutions.  
Every day, we help billions of people experience a more open world.

ASSA ABLOY Opening Solutions leads the development within door openings and products for access solutions in homes, businesses and institutions. Our offering includes doors, frames, door and window hardware, mechanical and smart locks, access control and service.

**McKinney**<sup>®</sup>  
**ASSA ABLOY**

McKinney  
225 Episcopal Road  
Berlin, CT 06037  
[www.mckinneyhinge.com](http://www.mckinneyhinge.com)  
1 800 346 7707

ASSA ABLOY Opening Solutions  
Door Security Solutions Canada  
160 Four Valley Drive  
Vaughan, ON L4K 4T9  
[www.assaabloydss.ca](http://www.assaabloydss.ca)  
1 800 461 3007