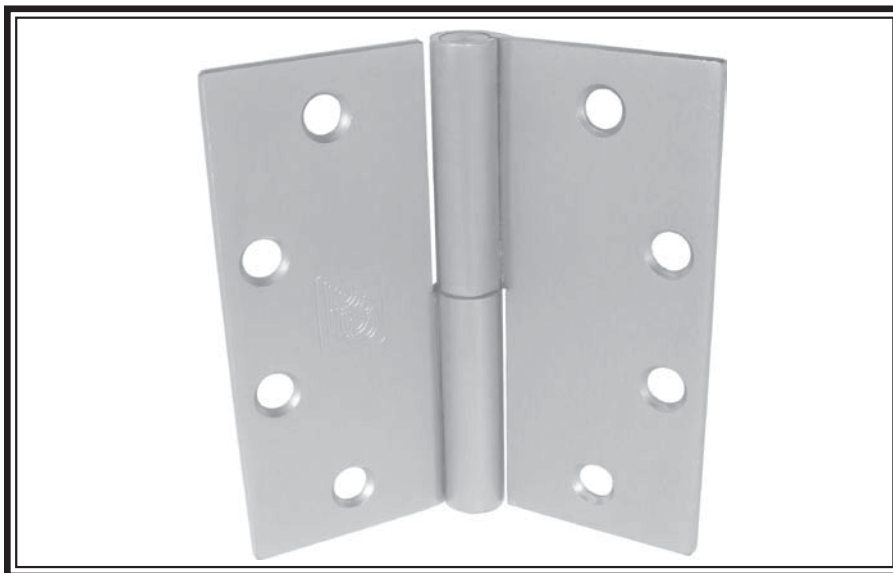




2-KNUCKLE FULL MORTISE PLAIN BEARING

STANDARD WEIGHT
4 1/2" x 4" 4 1/2" x 4 1/2"

B6



2P81 (ANSI A8133)
Steel-Polished and Plated or Bonderized and Prime Coated for Painting.

2P51 (ANSI A5133)
Stainless Steel-Polished and Satin Finish

- For use on medium weight doors or doors requiring low frequency service.
- Not for use with door closer.
- Secure: Door cannot be lifted off when in closed position.
- Vertical load taken by nylon washer
- Handing of hinge is required.
- All hinges are ANSI template.

GENERAL PRODUCT INFORMATION: PBB, Inc. template hinges are manufactured to close tolerances and meet all specifications and requirements set by the American National Standards Institute (ANSI).

HINGE SWAGING: A standard swaging of our standard weight full mortise hinge when closed to parallel position provides a 1/16" clearance between leaves.

OTHER SPECIFICATIONS:

Height of hinge:	4.50 + .000	for 4-1/2" x 4"
	4.50 - .015	
	4.50 + .000	for 4-1/2" x 4-1/2"
	4.50 - .015	
Width:	4.00 ± .015	for 4-1/2" x 4"
	4.50 ± .015	for 4-1/2" x 4-1/2"

MATERIAL GAUGE:

- .134 ± .005 for 4-1/2" x 4"
- .134 ± .005 for 4-1/2" x 4-1/2"

4-1/2" STANDARD SCREW SIZE
FHMS - 12-24 x 1/2"
FHWS - 12 x 1-1/4"

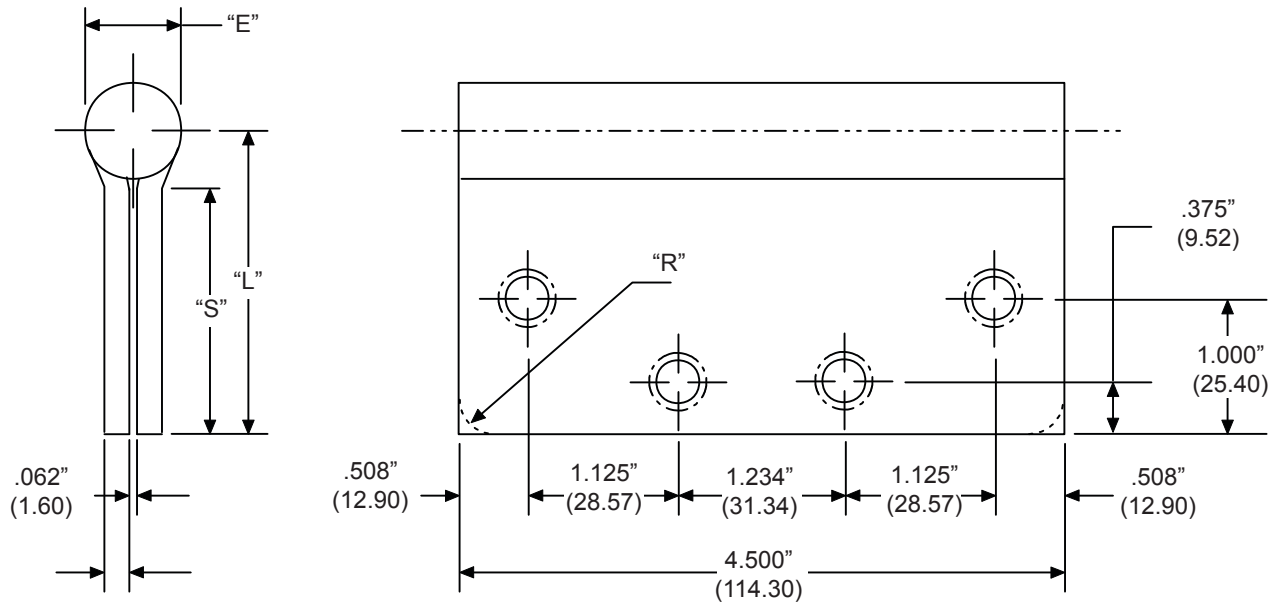
PACKAGING INFORMATION:

One hinge per plastic bag, 3 hinges and 1 screw pack per unit carton.
16 unit carton or 48 hinges per master shipping carton.
1 screw pack includes all machine screws (24), and 1/2 wood screws (12). ATMS & AWS also available.



FULL MORTISE HEAVY WEIGHT TEMPLATE

2B - 2P - 4B - 4C - 4F
4-1/2" x 4", 4-1/2" x 4-1/2"



L10

Part Number			Gauge of Metal	"E" Outside Dia.	"L" Leaf Width	"S" Swage Line	"R" Corner Radius
Steel	Brass	Stainless					
2B81/2P81	-	2B51/2P51	.134"	.600"	2.00"	1.63"	Square
2B81/2P81	-	2B51/2P51	.134"	.600"	2.25"	1.88"	Square
4B81*/4C81	4B21/4C21	4B51/4C51	.180"	.720"	2.00"	1.57"	Square, 1/4", 5/8"
4B81*/4C81	4B21/4C21	4B51/4C51	.180"	.720"	2.25"	1.82"	Square, 1/4", 5/8"

*Also available as welding butts with identical dimensions and the exclusion of screw holes.

NOTE:

- 1 screw pack includes all machine screws (24), and 1/2 wood screws (12). ATMS & AWS also available.
- Screw size: FHMS - 12-24 x 1/2"
FHWS - 12 x 1-1/4"
- All hinges are ANSI template.

PBB, Inc.
 World Class Hinges
 1311 E. Philadelphia Street • Ontario • CA 91761 • USA
 PBB reserves the right to make changes without notice.

Template: 2B45/4B45